



# Brazoria Drainage District No. 4

4813 W. Broadway  
Pearland, TX 77581

Tel: 281-485-1434  
Fax: 281-485-0065

Brazoria Drainage District No. 4  
Benchmark Sheet

## Benchmark No. CO-5

**General Location:** County Road 115 (Wells Drive) at Cowarts Creek

Latitude: 29° 31' 24.74" N

Longitude: 95° 16' 50.67" W

Grid Northing: 13,756,704.09

Grid Easting: 3,151,079.77

State Plane Coordinates, Texas South Central Zone  
(4204), NAD 83

Elevation: 45.73      NAVD 88, 2001 Adjustment

Benchmark No. CO-5 is a brass disk stamped 'Brazoria Drainage District No. 4 BM No. CO-5' set on upstream side of concrete bridge near stream centerline, at County Road 115 (Wells Drive) and Cowarts Creek, west side of County Road 115, in KeyMap 655B near Unit C100-00-00.

Date: 05/09/13

### Detail Sketch

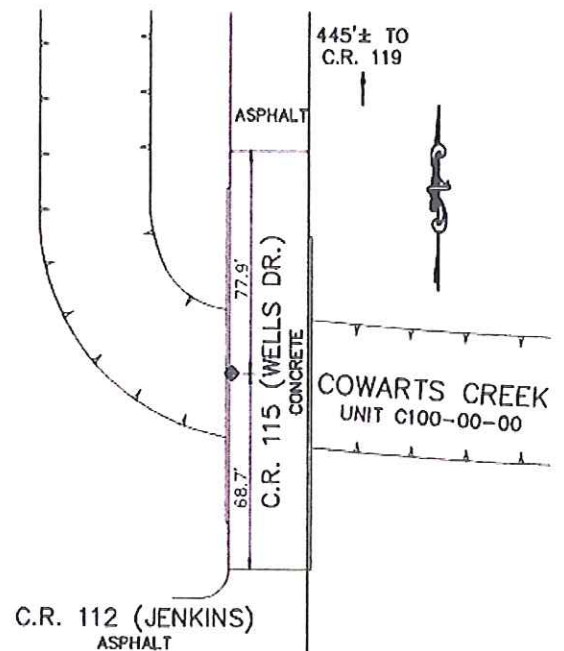


Photo – Station Detail



Photo – Station Area

