



Brazoria Drainage District No. 4

4813 W. Broadway
Pearland, TX 77581

Tel: 281-485-1434
Fax: 281-485-0065

Brazoria Drainage District No. 4
Benchmark Sheet

Benchmark No. LE-1

General Location: State Highway 35 at LeClaire Ditch

Latitude: 29° 30' 58.62" N

Longitude: 95° 15' 24.55" W

Grid Northing: 13,754,309.75

Grid Easting: 3,158,768.16

State Plane Coordinates, Texas South Central Zone
(4204), NAD 83

Elevation: 41.82 NAVD 88, 2001 Adjustment

Benchmark No. LE-1 is a brass disk stamped 'LE-1' set on a concrete headwall, upstream side of LeClaire Ditch at State Highway 35 and LeClaire Ditch, at stream centerline, west side of State Highway 35, in KeyMap 655H near Unit C107-00-00.

Date: 09/11/15

Detail Sketch

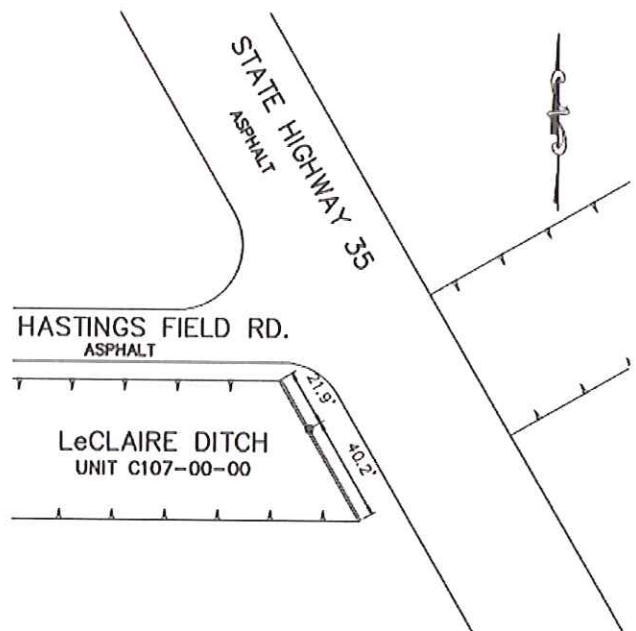


Photo – Station Detail

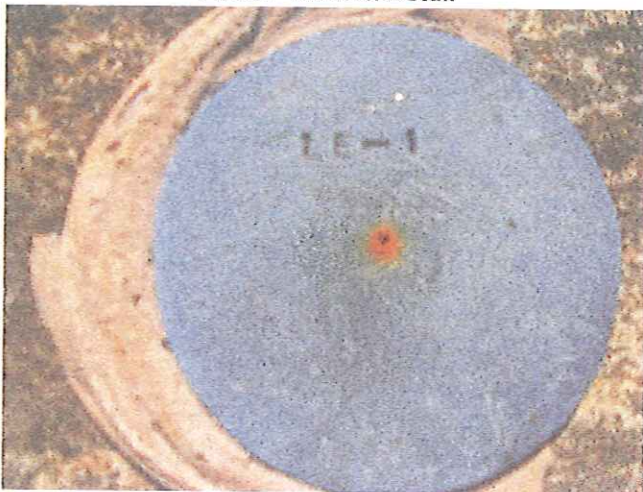


Photo – Station Area

