



Brazoria Drainage District No. 4

4813 W. Broadway
Pearland, TX 77581

Tel: 281-485-1434
Fax: 281-485-0065

**Brazoria Drainage District No. 4
Benchmark Sheet**

Benchmark No. BDD4-1

General Location: Brazoria Drainage District Office at F.M. 518 and Francis Drive

Latitude: 29° 33' 39.24" N

Longitude: 95° 17' 49.34" W

Grid Northing: 13,770,117.34

Grid Easting: 3,145,469.51

State Plane Coordinates, Texas South Central Zone
(4204), NAD 83

Elevation: 48.06' NAVD 88, 2001 Adjustment

Benchmark No. BDD4-1 is a brass cap stamped 'BDD4-1' set in the curblin at the southwest corner of the front parking lot for the Brazoria Drainage District Number 4 office building at 4813 Broadway Street, F.M. 518 and Francis Drive, in KeyMap 614M.

Date: 06/30/17

Detail Sketch

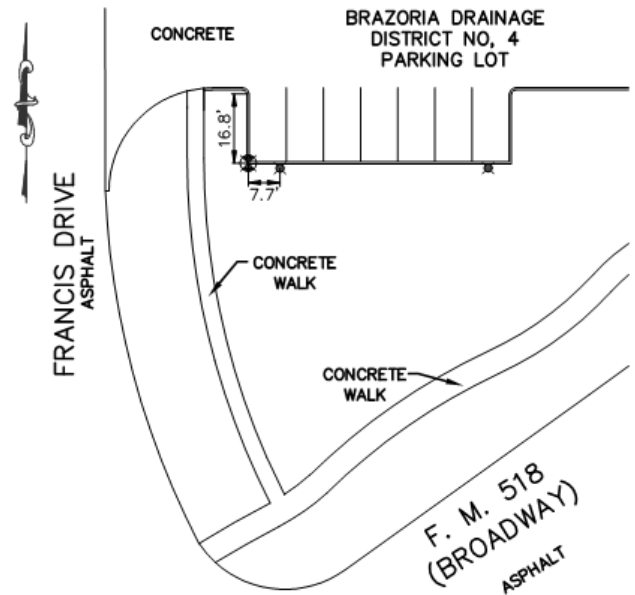


Photo – Station Detail



Photo – Station Area





Brazoria Drainage District No. 4

4813 W. Broadway
Pearland, TX 77581

Tel: 281-485-1434
Fax: 281-485-0065

Brazoria Drainage District No. 4
Benchmark Sheet

Benchmark No. C112-3

General Location: County Road 128 and Cannon Ditch

Latitude: 29° 30' 06.72" N

Longitude: 95° 15' 18.57" W

Grid Northing: 13,749,086.86

Grid Easting: 3,159,463.61

State Plane Coordinates, Texas South Central Zone
(4204), NAD 83

Elevation: 39.32 NAVD 88, 2001 Adjustment

Benchmark No. C112-3 is a brass disk stamped 'Brazoria Drainage District No. 4 BM No. C112-3' set on the upstream side of a concrete bridge near stream centerline at County Road 128 (Hasting Cannon Road) and Cannon Ditch, south side of County Road 128, in KeyMap 655L near Cannon Ditch.

Date: 05/09/13

Detail Sketch

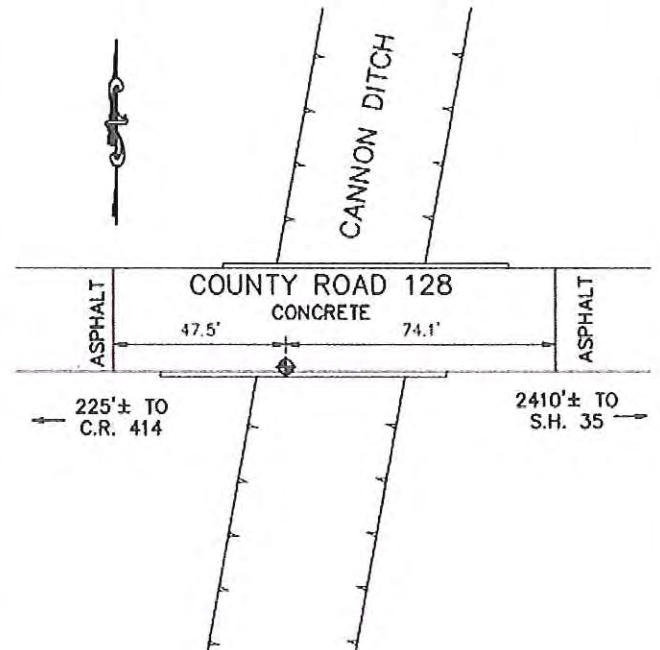


Photo – Station Detail

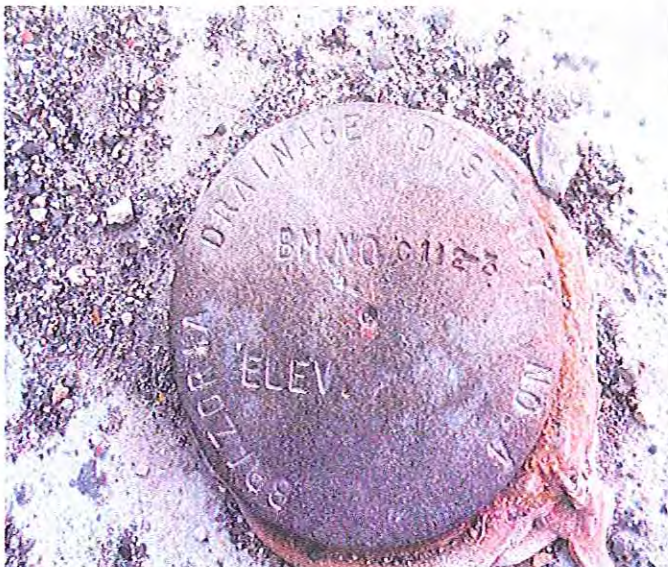


Photo – Station Area





Brazoria Drainage District No. 4

4813 W. Broadway
Pearland, TX 77581

Tel: 281-485-1434
Fax: 281-485-0065

Brazoria Drainage District No. 4
Benchmark Sheet

Benchmark No. CB-2

General Location: County Road 81 at West Fork Chocolate Bayou

Latitude: 29° 28' 05.72" N

Longitude: 95° 25' 30.15" W

Grid Northing: 13,735,180.19

Grid Easting: 3,105,827.37

State Plane Coordinates, Texas South Central Zone
(4204), NAD 83

Elevation: 56.51' NAVD 88, 2001 Adjustment

Benchmark No. CB-2 is a brass cap stamped 'CB-2' set in the north side of County Road 81 bridge over West Fork Chocolate Bayou, at stream centerline, in KeyMap 652X, near Unit CB100-00-00.

Date: 06/30/17

Detail Sketch

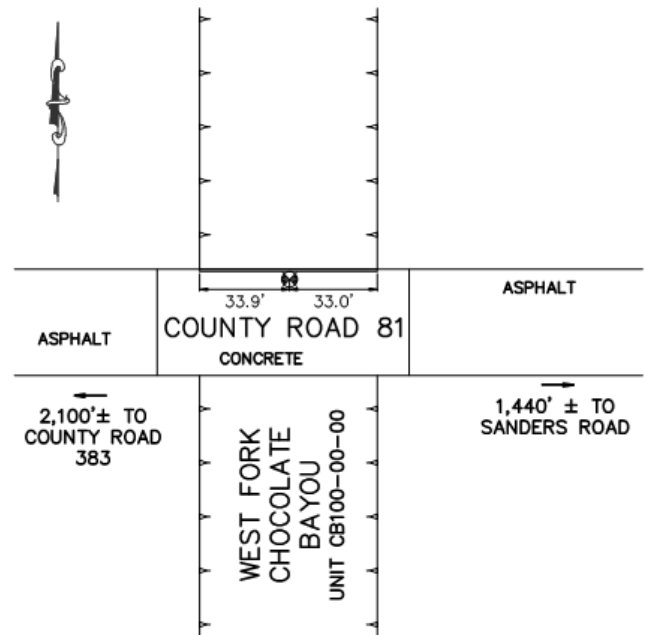


Photo – Station Detail



Photo – Station Area





Brazoria Drainage District No. 4

4813 W. Broadway
Pearland, TX 77581

Tel: 281-485-1434
Fax: 281-485-0065

Brazoria Drainage District No. 4
Benchmark Sheet

Benchmark No. CC-4

General Location: Kirby Drive at Clear Creek

Latitude: 29° 34' 54.96" N

Longitude: 95° 24' 01.94" W

Grid Northing: 13,776,735.02

Grid Easting: 3,112,317.78

State Plane Coordinates, Texas South Central Zone
(4204), NAD 83

Elevation: 64.52 NAVD 88, 2001 Adjustment

Benchmark No. CC-4 is a brass disk stamped 'CC-4' set on the downstream sidewalk of a concrete bridge at Kirby Drive and Clear Creek, at stream centerline, east side of Kirby Drive, in KeyMap 612H near Unit A100-00-00.

Date: 09/11/15

Detail Sketch

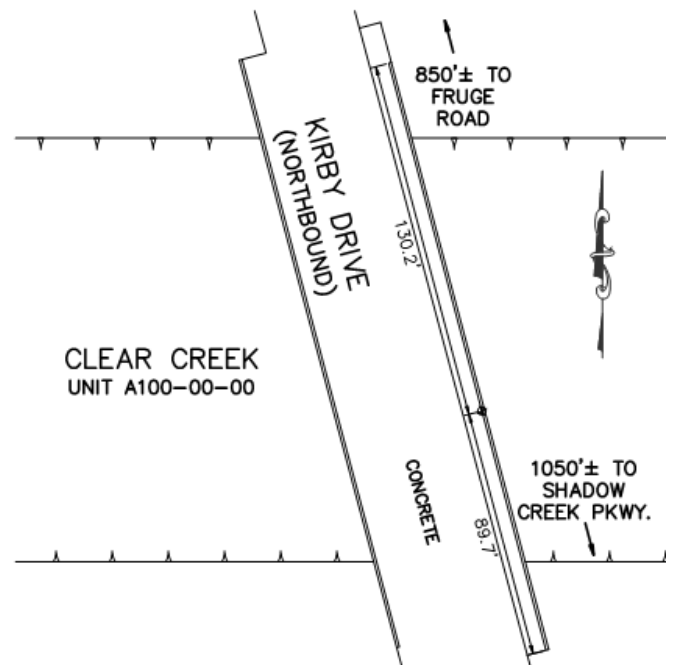


Photo – Station Detail



Photo – Station Area





Brazoria Drainage District No. 4

4813 W. Broadway
Pearland, TX 77581

Tel: 281-485-1434
Fax: 281-485-0065

Brazoria Drainage District No. 4
Benchmark Sheet

Benchmark No. CO-2

General Location: County Road 130 at Cowart's Creek

Latitude: 29° 30' 51.09" N

Longitude: 95° 14' 18.92" W

Grid Northing: 13,753,734.98

Grid Easting: 3,164,587.26

State Plane Coordinates, Texas South Central Zone
(4204), NAD 83

Elevation: 34.84' NAVD 88, 2001 Adjustment

Benchmark No. CO-2 is a brass disk stamped 'CO-2' set on the southeasterly side of a concrete bridge along County Road 130 at Cowart's Creek, at stream centerline, southeasterly side of County Road 130, in KeyMap 656E near Unit C100-00-00.

Date: 06/30/17

Detail Sketch

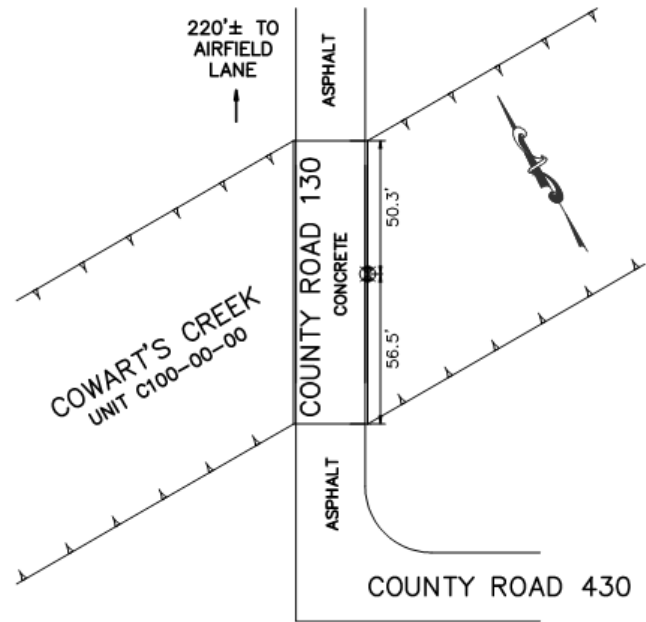


Photo – Station Detail



Photo – Station Area





Brazoria Drainage District No. 4

4813 W. Broadway
Pearland, TX 77581

Tel: 281-485-1434
Fax: 281-485-0065

Brazoria Drainage District No. 4
Benchmark Sheet

Benchmark No. CO-3

General Location: Dixie Farm Road at Cowart's Creek

Latitude: 29° 31' 49.88" N

Longitude: 95° 15' 00.34" W

Grid Northing: 13,759,522.58

Grid Easting: 3,160,739.82

State Plane Coordinates, Texas South Central Zone
(4204), NAD 83

Elevation: 41.84 NAVD 88, 2001 Adjustment

Benchmark No. CO-3 is a brass disk stamped 'CO-3' set on the downstream sidewalk of a concrete bridge at Dixie Farm Road and Cowart's Creek, at stream centerline, east side of Dixie Farm Road, in KeyMap 655D near Unit C100-00-00.

Date: 09/11/15

Detail Sketch

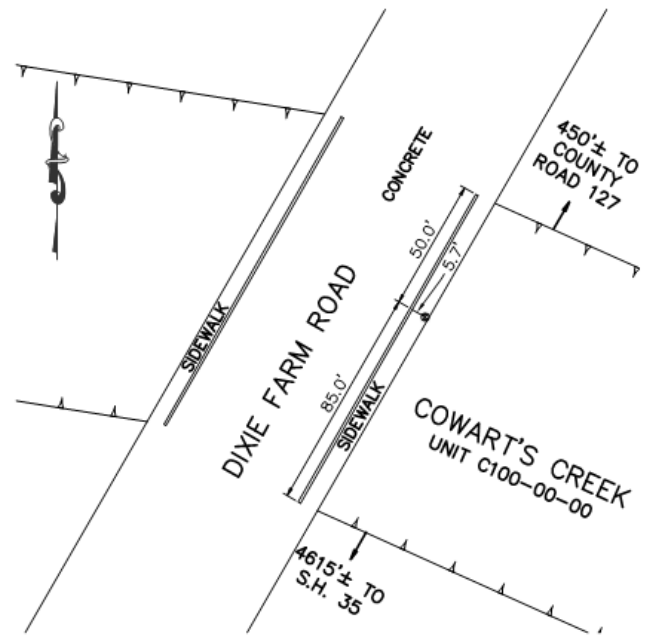


Photo – Station Detail



Photo – Station Area





Brazoria Drainage District No. 4

4813 W. Broadway
Pearland, TX 77581

Tel: 281-485-1434
Fax: 281-485-0065

Brazoria Drainage District No. 4
Benchmark Sheet

Benchmark No. CO-4

General Location: State Highway 35 at Cowart's Creek

Latitude: 29° 31' 25.61" N

Longitude: 95° 15' 41.64" W

Grid Northing: 13,756,986.28

Grid Easting: 3,157,171.90

State Plane Coordinates, Texas South Central Zone
(4204), NAD 83

Elevation: 41.46 NAVD 88, 2001 Adjustment

Benchmark No. CO-4 is a brass disk stamped 'CO-4' set on a concrete headwall, downstream side of an asphalt bridge at State Highway 35 and Cowart's Creek, at stream centerline, east side of State Highway 35, in KeyMap 655C near Unit C100-00-00.

Date: 09/11/15

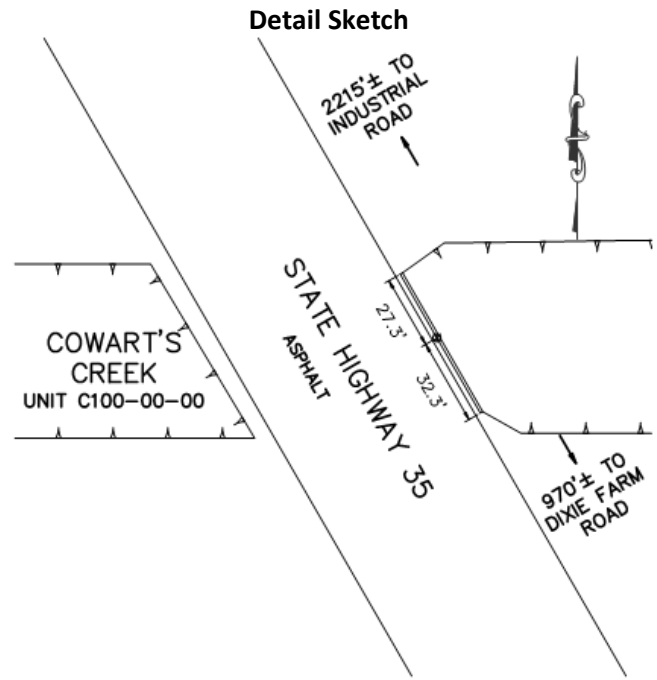


Photo – Station Detail



Photo – Station Area





Brazoria Drainage District No. 4

4813 W. Broadway
Pearland, TX 77581

Tel: 281-485-1434
Fax: 281-485-0065

Brazoria Drainage District No. 4
Benchmark Sheet

Benchmark No. CO-5

General Location: County Road 115 (Wells Drive) at Cowarts Creek

Latitude: 29° 31' 24.74" N

Longitude: 95° 16' 50.67" W

Grid Northing: 13,756,704.09

Grid Easting: 3,151,079.77

State Plane Coordinates, Texas South Central Zone
(4204), NAD 83

Elevation: 45.73 NAVD 88, 2001 Adjustment

Benchmark No. CO-5 is a brass disk stamped 'Brazoria Drainage District No. 4 BM No. CO-5' set on upstream side of concrete bridge near stream centerline, at County Road 115 (Wells Drive) and Cowarts Creek, west side of County Road 115, in KeyMap 655B near Unit C100-00-00.

Date: 05/09/13

Detail Sketch

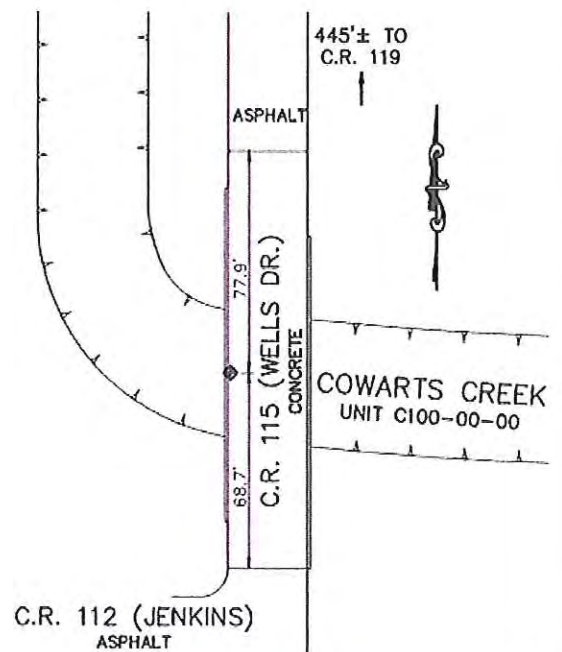


Photo – Station Detail

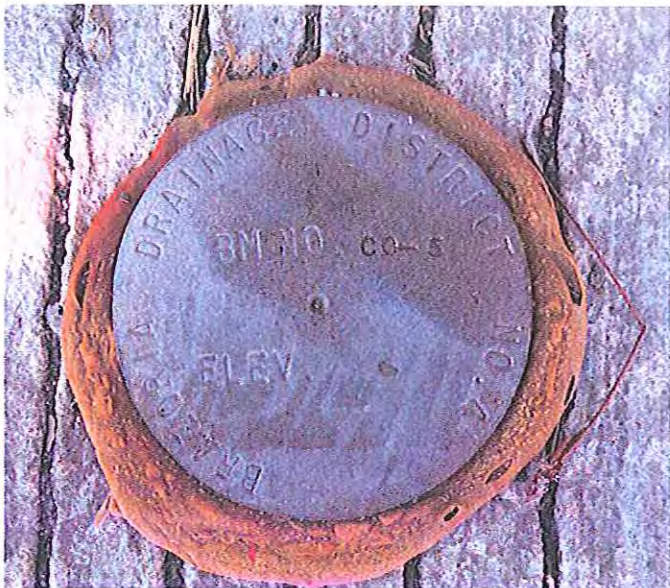


Photo – Station Area





Brazoria Drainage District No. 4

4813 W. Broadway
Pearland, TX 77581

Tel: 281-485-1434
Fax: 281-485-0065

Brazoria Drainage District No. 4
Benchmark Sheet

Benchmark No. CO-6

General Location: County Road 143 at Cowart's Creek

Latitude: 29° 30' 32.61" N

Longitude: 95° 17' 19.29" W

Grid Northing: 13,751,360.39

Grid Easting: 3,148,720.28

State Plane Coordinates, Texas South Central Zone
(4204), NAD 83

Elevation: 46.91 NAVD 88, 2001 Adjustment

Benchmark No. CO-6 is a brass disk stamped 'CO-6' set on a concrete headwall, downstream side of Cowart's Creek at County Road 143 and Cowart's Creek, at stream centerline, east side of County Road 143, in KeyMap 655E near Unit C100-00-00.

Date: 09/11/15

Detail Sketch

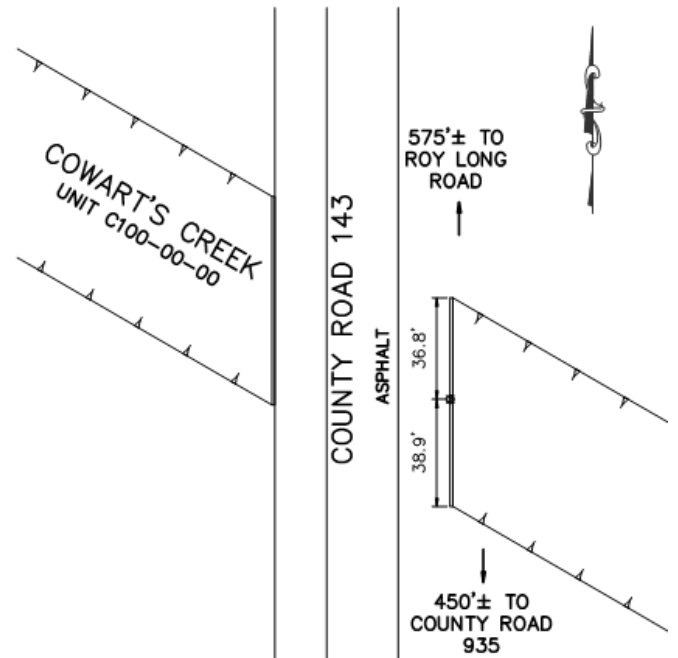


Photo – Station Detail



Photo – Station Area





Brazoria Drainage District No. 4

4813 W. Broadway
Pearland, TX 77581

Tel: 281-485-1434
Fax: 281-485-0065

Brazoria Drainage District No. 4
Benchmark Sheet

Benchmark No. CR58-1

General Location: County Road 58 at Outfall "A"

Latitude: 29° 30' 43.40" N

Longitude: 95° 24' 47.71" W

Grid Northing: 13,751,214.47

Grid Easting: 3,109,088.22

State Plane Coordinates, Texas South Central Zone
(4204), NAD 83

Elevation: 59.14 NAVD 88, 2001 Adjustment

Benchmark No. CR58-1 is a brass disk stamped 'CR58-1' set on a concrete headwall at the intersection of Outfall "A" and the north side of County Road 58, in KeyMap 652G near CR58 West Detention.

Date: 09/11/15

Detail Sketch

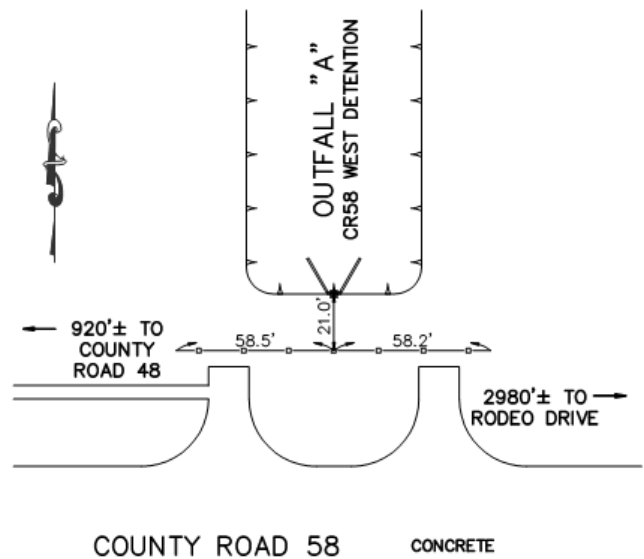


Photo – Station Detail



Photo – Station Area





Brazoria Drainage District No. 4

4813 W. Broadway
Pearland, TX 77581

Tel: 281-485-1434
Fax: 281-485-0065

Brazoria Drainage District No. 4
Benchmark Sheet

Benchmark No. CR128-2

General Location: Veterans Drive at County Road 128

Latitude: 29° 30' 06.89" N

Longitude: 95° 17' 18.79" W

Grid Northing: 13,748,766.00

Grid Easting: 3,148,846.32

State Plane Coordinates, Texas South Central Zone
(4204), NAD 83

Elevation: 42.43' NAVD 88, 2001 Adjustment

Benchmark No. CR128-2 is a brass disk stamped
'CR128-2' set on concrete headwall at the northeast
intersection of Veterans Drive and County Road 128, at
the stream centerline of Trevino Ditch, in KeyMap 655J
near Unit C103-00-00.

Date: 06/30/17

Detail Sketch

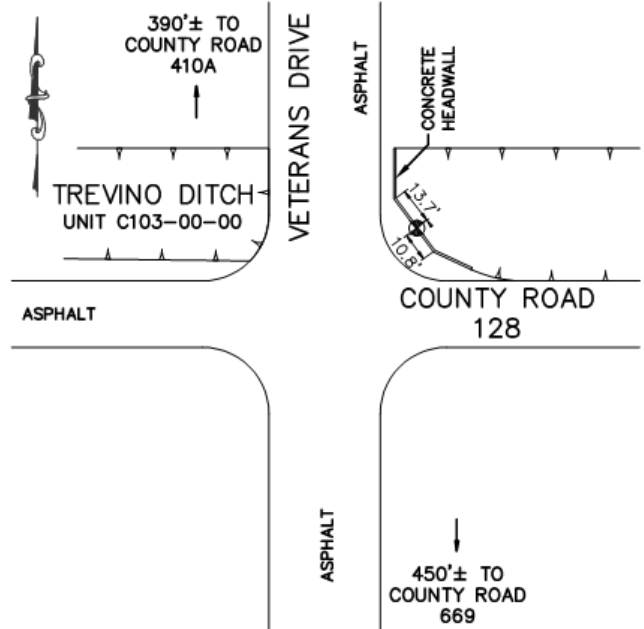


Photo – Station Detail



Photo – Station Area





Brazoria Drainage District No. 4

4813 W. Broadway
Pearland, TX 77581

Tel: 281-485-1434

Fax: 281-485-0065

Brazoria Drainage District No. 4
Benchmark Sheet

Benchmark No. H-1

General Location: Robinson Road at Hickory Slough

Latitude: 29° 35' 33.48" N

Longitude: 95° 16' 22.37" W

Grid Northing: 13,781,894.20

Grid Easting: 3,152,778.44

State Plane Coordinates, Texas South Central Zone
(4204), NAD 83

Elevation: 42.27 NAVD 88, 2001 Adjustment

Benchmark No. H-1 is a brass disk stamped 'Brazoria Drainage District No. 4 BM No. H-1' set on the downstream side of a concrete bridge at Robinson Road and Hickory Slough, east side of Robinson Road near centerline of stream, in KeyMap 615B near Unit H100-00-00.

Date: 05/09/13

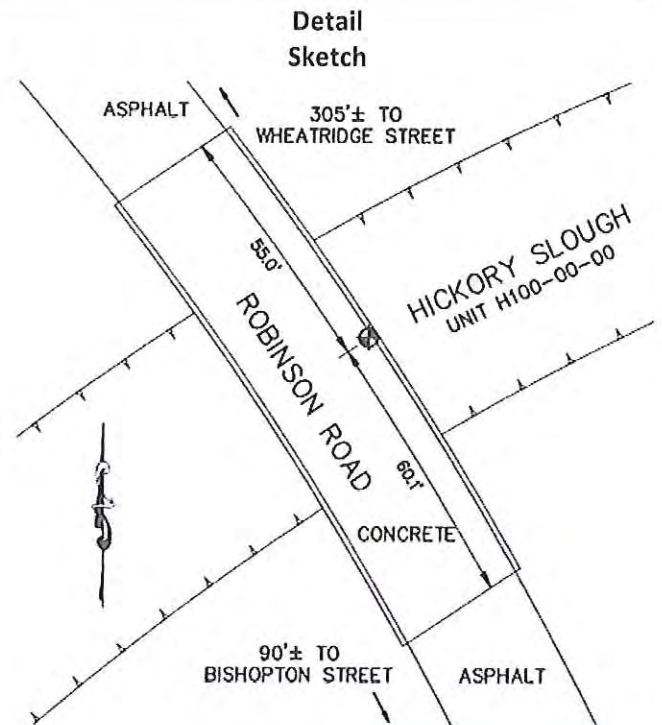


Photo - Station Detail



Photo - Station Area





Brazoria Drainage District No. 4

4813 W. Broadway
Pearland, TX 77581

Tel: 281-485-1434
Fax: 281-485-0065

Brazoria Drainage District No. 4
Benchmark Sheet

Benchmark No. H-5

General Location: Mykawa Road at Hickory Slough

Latitude: 29° 34' 47.78" N

Longitude: 95° 17' 41.25" W

Grid Northing: 13,777,059.47

Grid Easting: 3,145,964.88

State Plane Coordinates, Texas South Central Zone
(4204), NAD 83

Elevation: 50.34' NAVD 88, 2001 Adjustment

Benchmark No. H-5 is a brass cap stamped 'H-5' set in concrete sidewalk along the east side of a bridge at Mykawa Road and Hickory Slough, at stream centerline, in KeyMap 615E, near Unit H100-00-00.

Date: 06/30/17

Detail Sketch

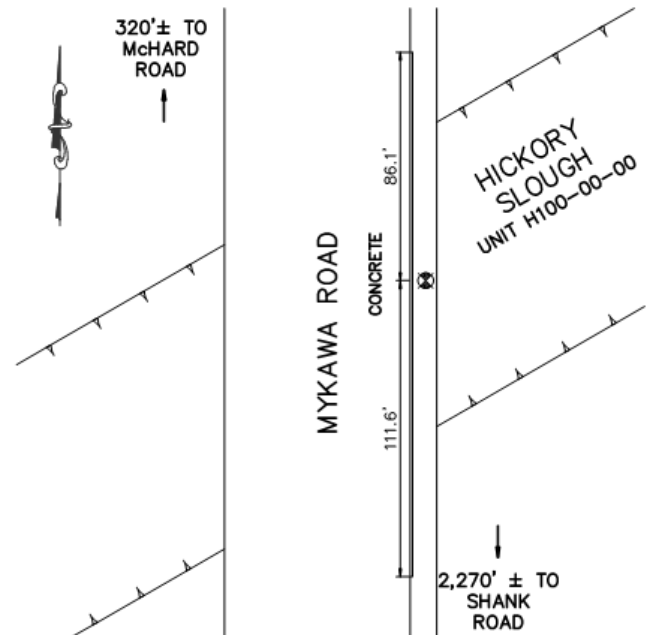


Photo – Station Detail



Photo – Station Area





Brazoria Drainage District No. 4

4813 W. Broadway
Pearland, TX 77581

Tel: 281-485-1434
Fax: 281-485-0065

**Brazoria Drainage District No. 4
Benchmark Sheet**

Benchmark No. H-6

General Location: Hatfield Road at Hickory Slough

Latitude: 29° 34' 37.28" N

Longitude: 95° 18' 29.22" W

Grid Northing: 13,775,859.89

Grid Easting: 3,141,760.66

State Plane Coordinates, Texas South Central Zone
(4204), NAD 83

Elevation: 47.66 NAVD 88, 2001 Adjustment

Benchmark No. H-6 is a brass disk stamped 'Brazoria Drainage District No. 4 BM No. H-6' set on the upstream side of a concrete bridge at Hatfield Road and Hickory Slough at stream centerline, west side of Hatfield Road, in KeyMap 614G near Unit H100-00-00.

Date: 05/09/13

Revised 09/11/15 to correct elevation

Detail Sketch

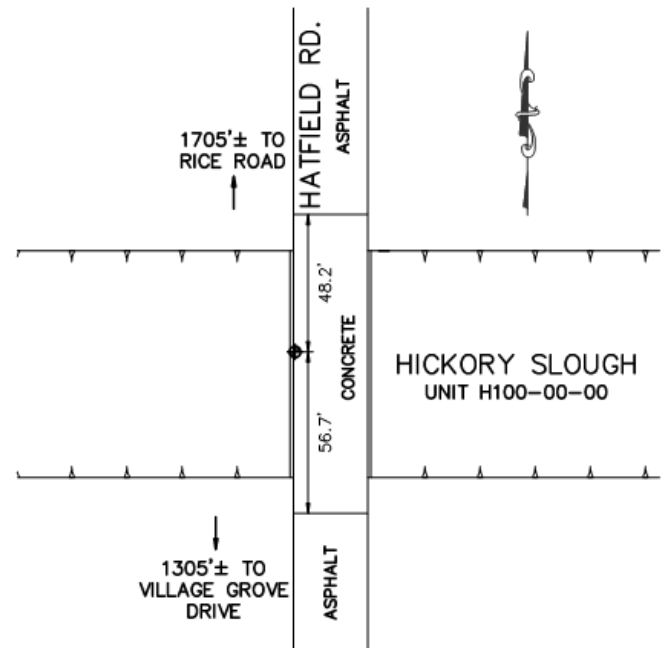


Photo – Station Detail



Photo – Station Area





Brazoria Drainage District No. 4

4813 W. Broadway
Pearland, TX 77581

Tel: 281-485-1434
Fax: 281-485-0065

Brazoria Drainage District No. 4
Benchmark Sheet

Benchmark No. H-7

General Location: O'Day Road and Hickory Slough

Latitude: 29° 34' 36.48" N

Longitude: 95° 18' 52.83" W

Grid Northing: 13,775,718.87

Grid Easting: 3,139,683.86

State Plane Coordinates, Texas South Central Zone
(4204), NAD 83

Elevation: 49.02 NAVD 88, 2001 Adjustment

Benchmark No. H-7 is a brass disk stamped 'Brazoria Drainage District No. 4 BM No. H-7' set on the upstream side of a concrete bridge near the southwest corner of bridge at O'Day Road and Hickory Slough, west side of O'Day Road, in KeyMap 614G near Unit H100-00-00.

Date: 05/09/13

Detail Sketch

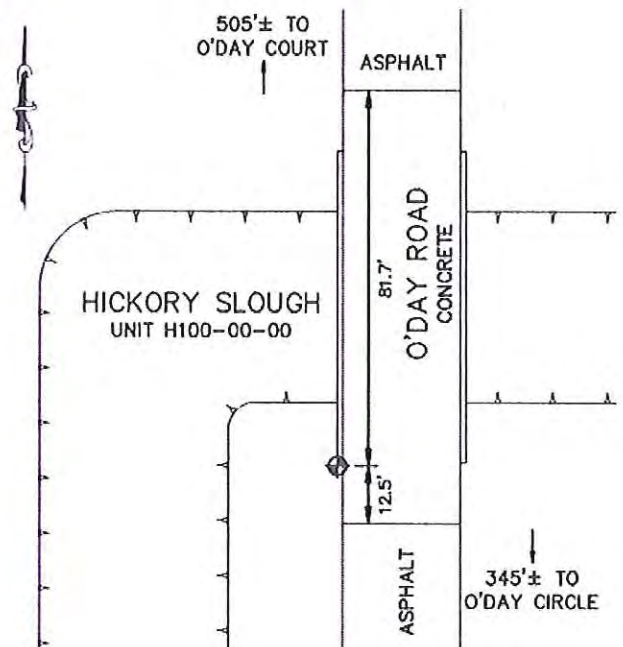


Photo - Station Detail

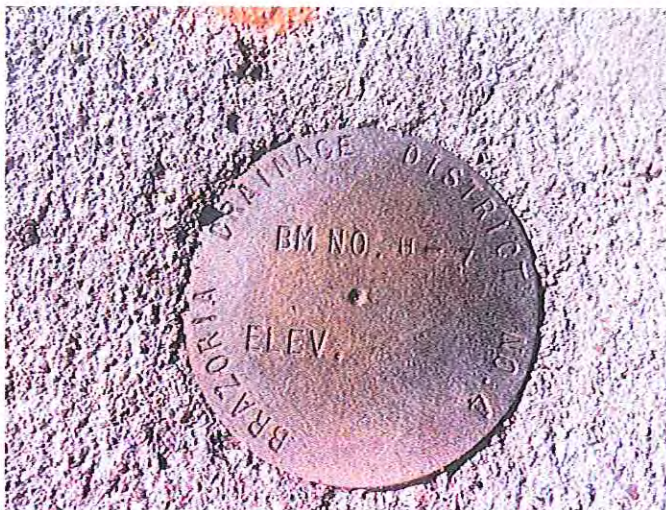


Photo - Station Area





Brazoria Drainage District No. 4

4813 W. Broadway
Pearland, TX 77581

Tel: 281-485-1434

Fax: 281-485-0065

Brazoria Drainage District No. 4
Benchmark Sheet

Benchmark No. H-9

General Location: Roy Road and Hickory Slough

Latitude: 29° 34' 15.68" N

Longitude: 95° 19' 37.88" W

Grid Northing: 13,773,494.21

Grid Easting: 3,135,773.95

State Plane Coordinates, Texas South Central Zone
(4204), NAD 83

Elevation: 54.73 NAVD 88, 2001 Adjustment

Benchmark No. H-9 is a brass disk stamped 'Brazoria Drainage District No. 4 BM No. H-9' set on top of a concrete wall on the downstream side of a concrete bridge at Roy Road and Hickory Slough at stream centerline, east side of Roy Road, in KeyMap 614K near Unit H100-00-00.

Date: 05/09/13

Detail Sketch

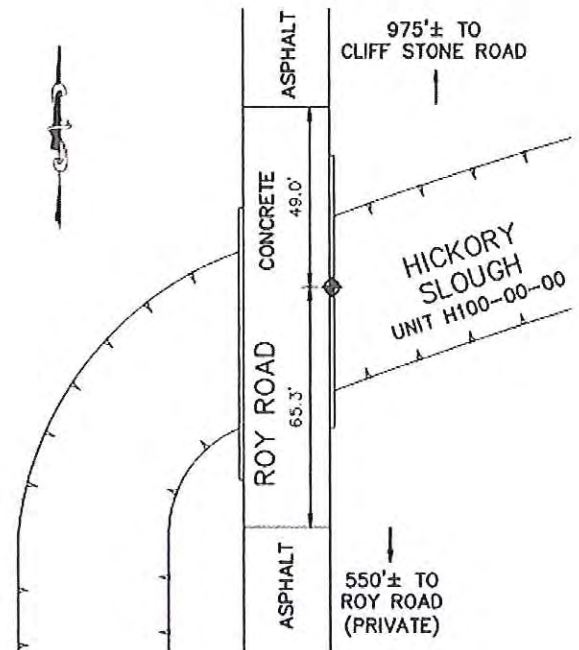


Photo – Station Detail



Photo – Station Area





Brazoria Drainage District No. 4

4813 W. Broadway
Pearland, TX 77581

Tel: 281-485-1434
Fax: 281-485-0065

Brazoria Drainage District No. 4
Benchmark Sheet

Benchmark No. H-10

General Location: Max Road at Hickory Slough

Latitude: 29° 34' 01.59" N

Longitude: 95° 20' 00.49" W

Grid Northing: 13,772.009.54

Grid Easting: 3,133,823.29

State Plane Coordinates, Texas South Central Zone
(4204), NAD 83

Elevation: 54.93' NAVD 88, 2001 Adjustment

Benchmark No. H-10 is a brass disk stamped 'H-10' set on the west side of the Max Road bridge over Hickory Slough, at the stream centerline, in KeyMap 614J near Unit H100-00-00.

Date: 06/30/17

Detail Sketch

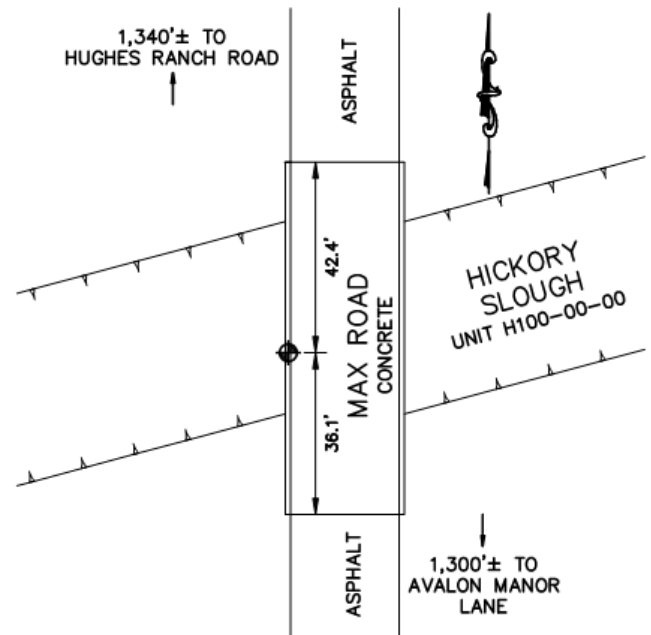


Photo – Station Detail



Photo – Station Area





Brazoria Drainage District No. 4

4813 W. Broadway
Pearland, TX 77581

Tel: 281-485-1434
Fax: 281-485-0065

Brazoria Drainage District No. 4
Benchmark Sheet

Benchmark No. H-13

General Location: Miller Ranch Road at Hickory Slough

Latitude: 29° 33' 47.68" N

Longitude: 95° 22' 24.45" W

Grid Northing: 13,770,208.35

Grid Easting: 3,121,161.50

State Plane Coordinates, Texas South Central Zone
(4204), NAD 83

Elevation: 57.51 NAVD 88, 2001 Adjustment

Benchmark No. H-13 is a brass disk stamped 'Brazoria Drainage District No. 4 BM No. H-13' set on the upstream side of a concrete bridge near the southwest corner of bridge at Miller Ranch Road and Hickory Slough, west side of Miller Ranch Road, in KeyMap 613K near Unit H100-00-00

Date: 05/09/13

Detail Sketch

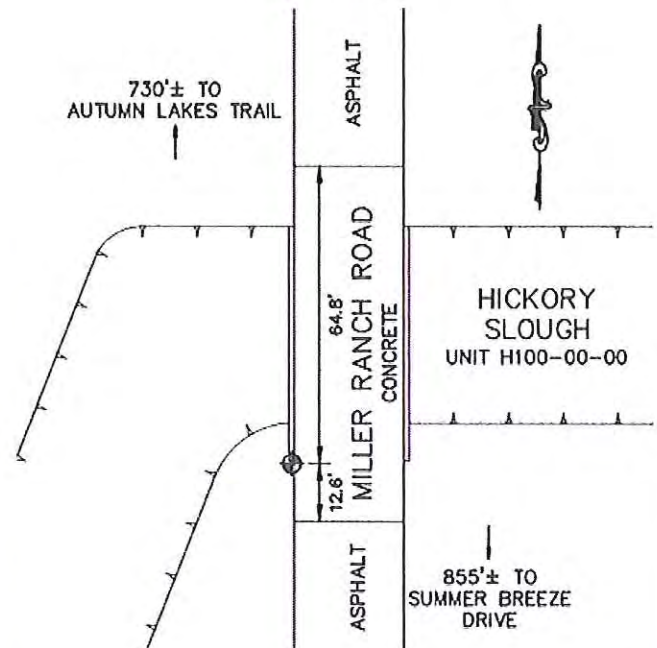


Photo – Station Detail



Photo – Station Area





Brazoria Drainage District No. 4

4813 W. Broadway
Pearland, TX 77581

Tel: 281-485-1434
Fax: 281-485-0065

**Brazoria Drainage District No. 4
Benchmark Sheet**

Benchmark No. LE-1

General Location: State Highway 35 at LeClaire Ditch

Latitude: 29° 30' 58.62" N

Longitude: 95° 15' 24.55" W

Grid Northing: 13,754,309.75

Grid Easting: 3,158,768.16

State Plane Coordinates, Texas South Central Zone
(4204), NAD 83

Elevation: 41.82 NAVD 88, 2001 Adjustment

Benchmark No. LE-1 is a brass disk stamped 'LE-1' set on a concrete headwall, upstream side of LeClaire Ditch at State Highway 35 and LeClaire Ditch, at stream centerline, west side of State Highway 35, in KeyMap 655H near Unit C107-00-00.

Date: 09/11/15

Detail Sketch

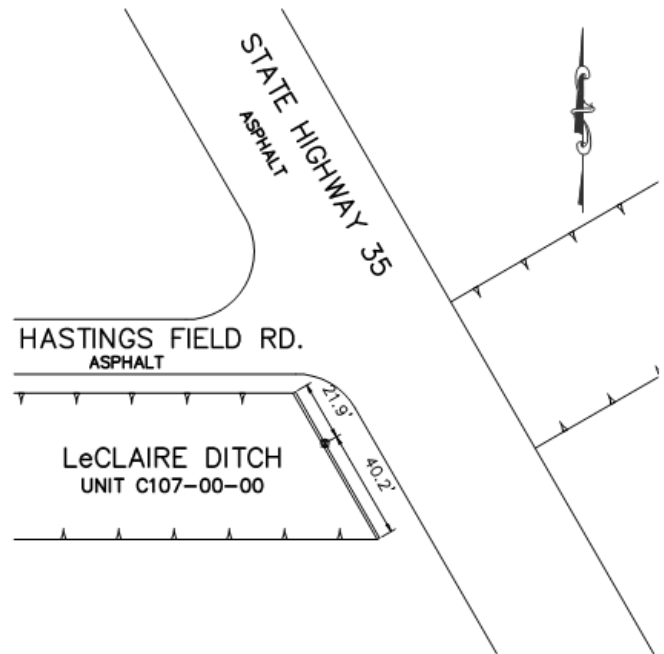


Photo – Station Detail

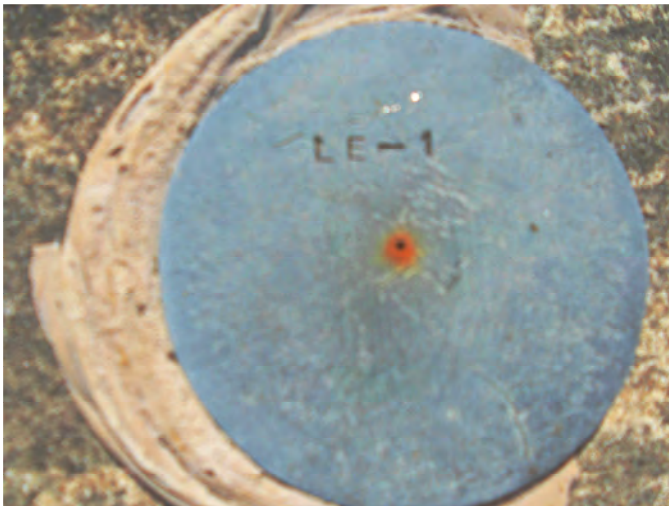


Photo – Station Area





Brazoria Drainage District No. 4

4813 W. Broadway
Pearland, TX 77581

Tel: 281-485-1434

Fax: 281-485-0065

**Brazoria Drainage District No. 4
Benchmark Sheet**

Benchmark No. M-4

General Location: Woodcreek Drive at Mary's Creek

Latitude: 29° 32' 55.90" N

Longitude: 95° 14' 14.57" W

Grid Northing: 13,766,347.86

Grid Easting: 3,164,566.22

State Plane Coordinates, Texas South Central Zone
(4204), NAD 83

Elevation: 37.51 NAVD 88, 2001 Adjustment

Benchmark No. M-4 is a brass disk stamped 'M-4' set on the downstream side of a concrete bridge near stream centerline at Woodcreek Drive and Mary's Creek, east side of Woodcreek Drive, in KeyMap 616S near Unit B100-00-00.

Date: 05/09/13

Detail Sketch

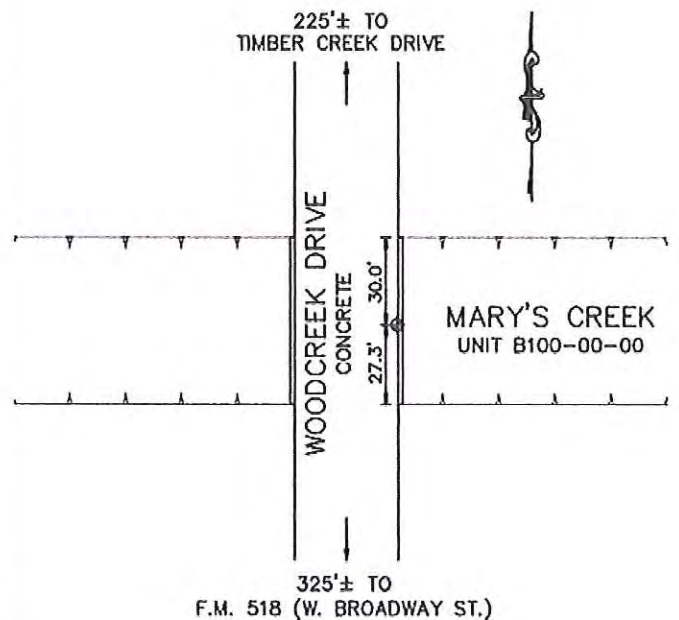


Photo – Station Detail



Photo – Station Area





Brazoria Drainage District No. 4

4813 W. Broadway
Pearland, TX 77581

Tel: 281-485-1434
Fax: 281-485-0065

Brazoria Drainage District No. 4
Benchmark Sheet

Benchmark No. M-6

General Location: Longherridge Drive at Mary's Creek

Latitude: 29° 32' 26.63" N

Longitude: 95° 15' 15.06" W

Grid Northing: 13,763,200.98

Grid Easting: 3,159,321.82

State Plane Coordinates, Texas South Central Zone
(4204), NAD 83

Elevation: 44.09' NAVD 88, 2001 Adjustment

Benchmark No. M-6 is a brass disk stamped 'M-6' set on northwesterly side of a concrete bridge at Longherridge Drive and Mary's Creek, at stream centerline, northwesterly side of Longherridge Drive, in KeyMap 615W near Unit M100-00-00.

Date: 06/30/17

Detail Sketch

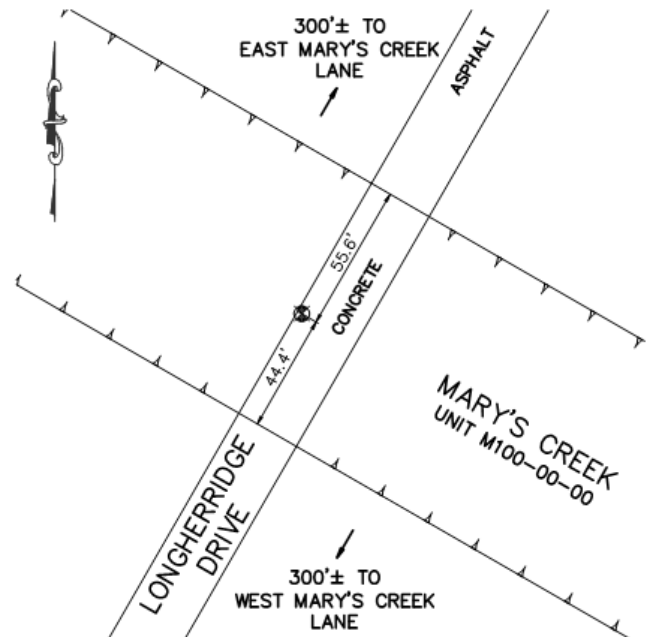


Photo – Station Detail

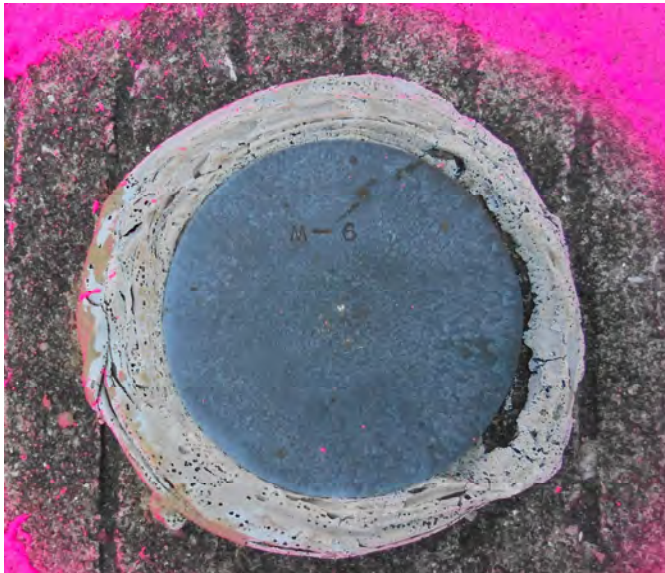


Photo – Station Area





Brazoria Drainage District No. 4

4813 W. Broadway
Pearland, TX 77581

Tel: 281-485-1434
Fax: 281-485-0065

Brazoria Drainage District No. 4
Benchmark Sheet

Benchmark No. M-7

General Location: John Lizer Road at Mary's Creek

Latitude: 29° 32' 49.36" N

Longitude: 95° 15' 53.12" W

Grid Northing: 13,765,408.28

Grid Easting: 3,155,888.40

State Plane Coordinates, Texas South Central Zone
(4204), NAD 83

Elevation: 46.05 NAVD 88, 2001 Adjustment

Benchmark No. M-7 is a brass disk stamped 'M-7' set on the upstream side of a concrete bridge at John Lizer Road and Mary's Creek, at stream centerline, north side of John Lizer Road, in KeyMap 615U near Unit B100-00-00.

Date: 09/11/15

Detail Sketch

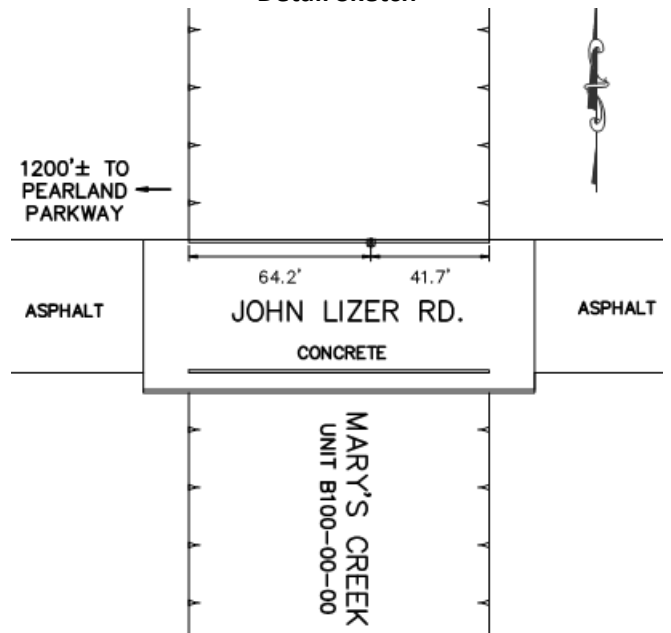


Photo – Station Detail



Photo – Station Area





Brazoria Drainage District No. 4

4813 W. Broadway
Pearland, TX 77581

Tel: 281-485-1434
Fax: 281-485-0065

Brazoria Drainage District No. 4
Benchmark Sheet

Benchmark No. M-9

General Location: Old Alvin Road at Mary's Creek

Latitude: 29° 33' 11.37" N

Longitude: 95° 16' 37.93" W

Grid Northing: 13,767,503.57

Grid Easting: 3,151,861.97

State Plane Coordinates, Texas South Central Zone
(4204), NAD 83

Elevation: 48.04 NAVD 88, 2001 Adjustment

Benchmark No. M-9 is a brass disk stamped 'Brazoria Drainage District No. 4 BM No. M-9', set on the downstream side of concrete bridge near stream centerline, at Old Alvin Road and Mary's Creek, east side of Old Alvin Road, in KeyMap 615P near Unit B100-00-00.

Date: 05/09/13

Revised 09/11/15 to correct elevation.

Detail Sketch

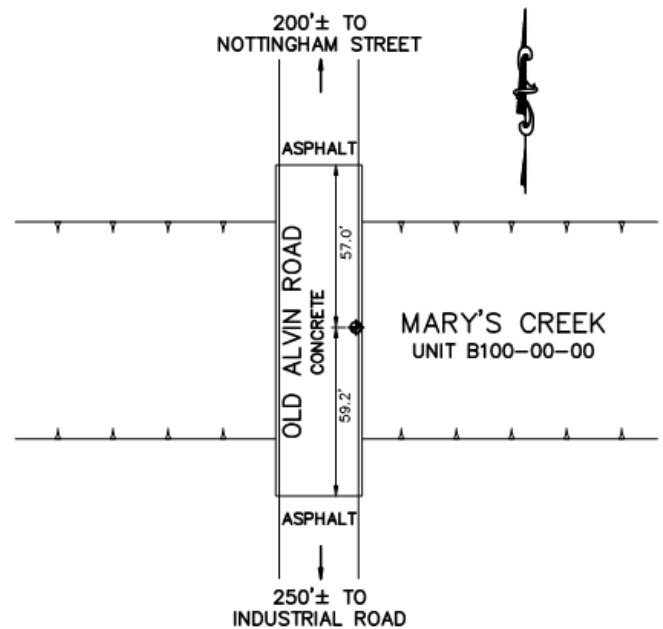


Photo – Station Detail



Photo – Station Area





Brazoria Drainage District No. 4

4813 W. Broadway
Pearland, TX 77581

Tel: 281-485-1434
Fax: 281-485-0065

Brazoria Drainage District No. 4
Benchmark Sheet

Benchmark No. M-11

General Location: Veterans Drive at Mary's Creek

Latitude: 29° 33' 05.36" N

Longitude: 95° 17' 24.73" W

Grid Northing: 13,766,765.76

Grid Easting: 3,147,750.23

State Plane Coordinates, Texas South Central Zone
(4204), NAD 83

Elevation: 49.50' NAVD 88, 2001 Adjustment

Benchmark No. M-11 is a brass disk stamped 'M-11' set in a concrete sidewalk on the east side of a bridge along Veterans Drive at Mary's Creek, at stream centerline, east side of Veterans Drive, in KeyMap 615S near Unit M100-00-00.

Date: 06/30/17

Detail Sketch

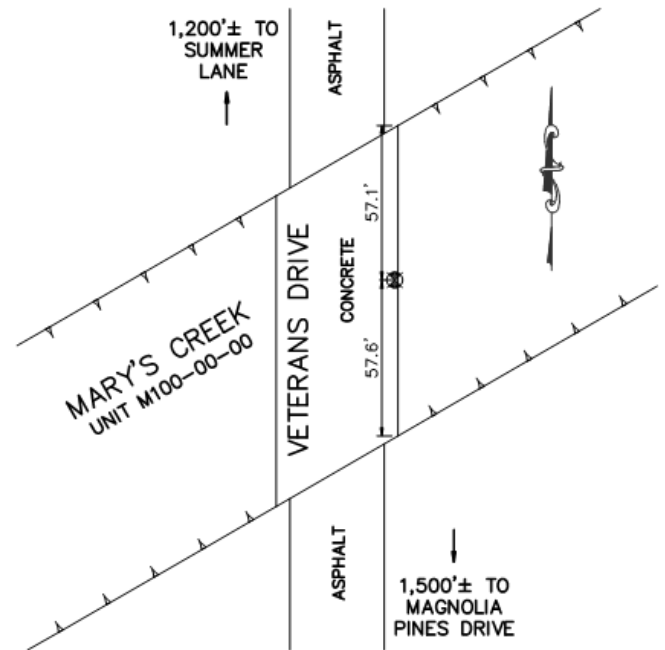


Photo – Station Detail



Photo – Station Area





Brazoria Drainage District No. 4

4813 W. Broadway
Pearland, TX 77581

Tel: 281-485-1434
Fax: 281-485-0065

**Brazoria Drainage District No. 4
Benchmark Sheet**

Benchmark No. M-14

General Location: County Road 89 at Mary's Creek

Latitude: 29° 32' 29.42" N

Longitude: 95° 20' 51.06" W

Grid Northing: 13,762,564.22

Grid Easting: 3,129,651.26

State Plane Coordinates, Texas South Central Zone
(4204), NAD 83

Elevation: 56.59 NAVD 88, 2001 Adjustment

Benchmark No. M-14 is a brass disk stamped 'M-14' set on a concrete headwall, upstream side of Mary's Creek at County Road 89 and Mary's Creek, at stream centerline, west side of County Road 89, in KeyMap 613V near Unit B100-00-00.

Date: 09/11/15

Detail Sketch

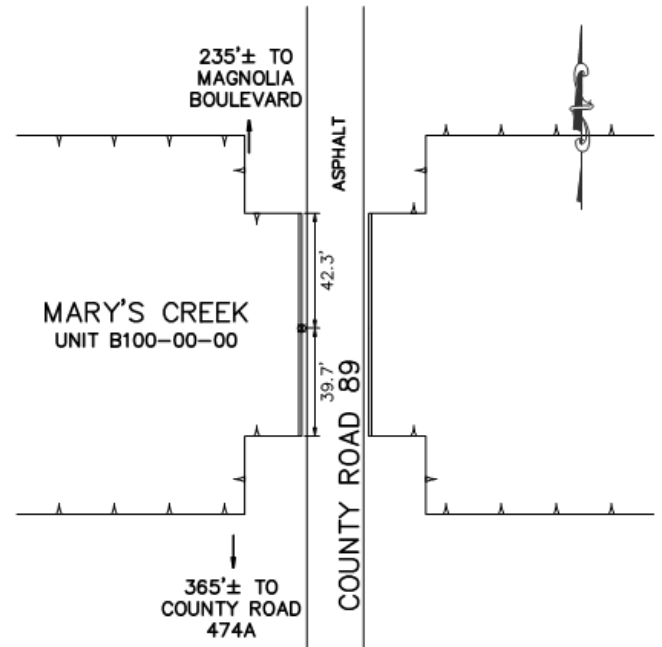


Photo – Station Detail



Photo – Station Area





Brazoria Drainage District No. 4

4813 W. Broadway
Pearland, TX 77581

Tel: 281-485-1434
Fax: 281-485-0065

Brazoria Drainage District No. 4
Benchmark Sheet

Benchmark No. M-15

General Location: F.M. 1128 AND Mary's Creek

Latitude: 29° 32' 29.02" N

Longitude: 95° 19' 51.15" W

Grid Northing: 13,762,689.62

Grid Easting: 3,134,941.33

State Plane Coordinates, Texas South Central Zone
(4204), NAD 83

Elevation: 46.10' NAVD 88, 2001 Adjustment

Benchmark No. M-15 is a brass cap stamped 'M-15' set in a concrete drainage structure along the west line of F.M. 1128 at the northwest intersection of F.M. 1128 and Mary's Creek, in KeyMap 614T, near Unit M100-00-00.

Date: 06/30/15

Detail Sketch

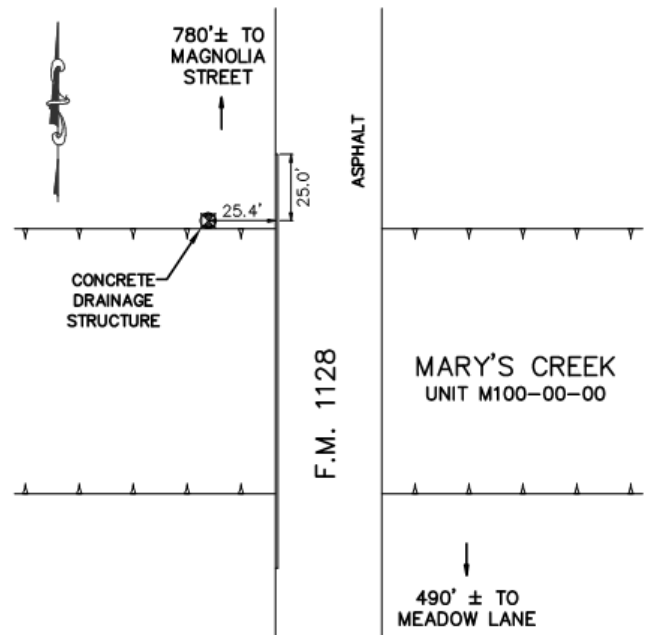


Photo – Station Detail



Photo – Station Area





Brazoria Drainage District No. 4

4813 W. Broadway
Pearland, TX 77581

Tel: 281-485-1434
Fax: 281-485-0065

Brazoria Drainage District No. 4
Benchmark Sheet

Benchmark No. M-16

General Location: County Road 107 (Arnold Road) at Mary's Creek Prong

Latitude: 29° 32' 05.11" N

Longitude: 95° 20' 35.37" W

Grid Northing: 13,760,153.43

Grid Easting: 3,131,113.25

State Plane Coordinates, Texas South Central Zone
(4204), NAD 83

Elevation: 53.67 NAVD 88, 2001 Adjustment

Benchmark No. M-16 is a brass disk stamped 'Brazoria Drainage District No. 4 BM No. M-16' set on the downstream side of a concrete bridge at County Road 107C (Arnold Road) and Mary's Creek Prong, north side of County Road 107C, in KeyMap page 614W near Unit B100-00-00.

Date: 05/09/13

Detail Sketch

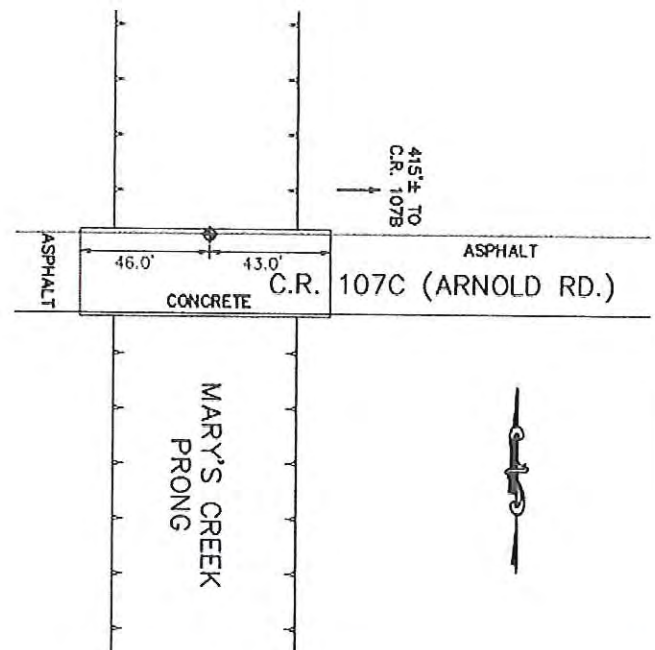


Photo - Station Detail

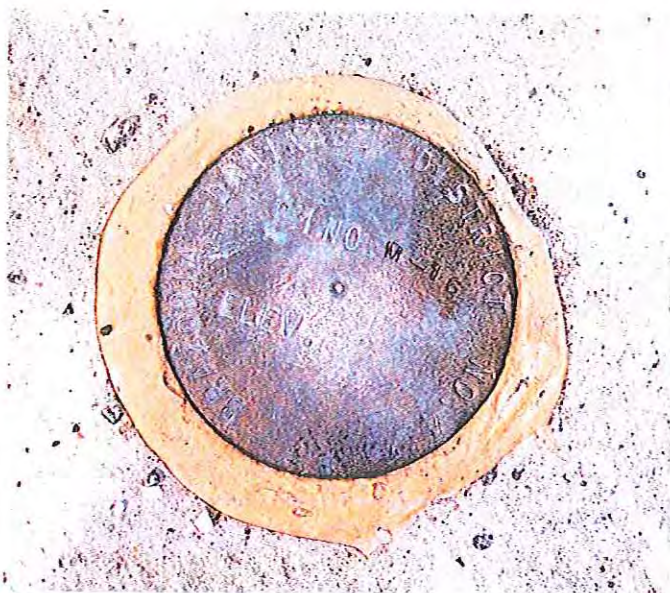


Photo - Station Area





Brazoria Drainage District No. 4

4813 W. Broadway
Pearland, TX 77581

Tel: 281-485-1434
Fax: 281-485-0065

Brazoria Drainage District No. 4
Benchmark Sheet

Benchmark No. MU-1

General Location: County Road 84 at Mustang Bayou

Latitude: 29° 31' 15.54" N

Longitude: 95° 23' 39.38" W

Grid Northing: 13,754,643.90

Grid Easting: 3,115,021.98

State Plane Coordinates, Texas South Central Zone
(4204), NAD 83

Elevation: 64.31 NAVD 88, 2001 Adjustment

Benchmark No. MU-1 is a brass disk stamped 'MU-1' set on the downstream side of a concrete bridge at County Road 84 and Mustang Bayou at stream centerline, east side of County Road 84, in KeyMap 652D near Unit D100-00-00.

Date: 09/11/15

Detail Sketch

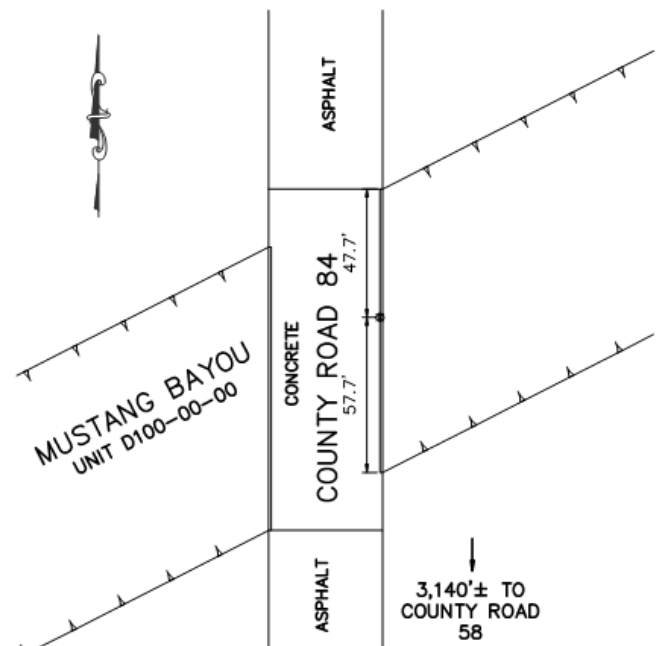


Photo – Station Detail



Photo – Station Area





Brazoria Drainage District No. 4

4813 W. Broadway
Pearland, TX 77581

Tel: 281-485-1434
Fax: 281-485-0065

Brazoria Drainage District No. 4
Benchmark Sheet

Benchmark No. MU-2

General Location: County Road 48 at Mustang Bayou

Latitude: 29° 31' 56.84" N

Longitude: 95° 24' 59.55" W

Grid Northing: 13,758,596.70

Grid Easting: 3,107,815.72

State Plane Coordinates, Texas South Central Zone
(4204), NAD 83

Elevation: 69.46' NAVD 88, 2001 Adjustment

Benchmark No. MU-2 is a brass cap stamped 'MU-2' set in concrete sidewalk in the east side of a bridge along the east line of County Road 48 at Mustang Bayou, at stream centerline, in KeyMap 612Y, near Unit MU100-00-00.

Date: 06/30/17

Detail Sketch

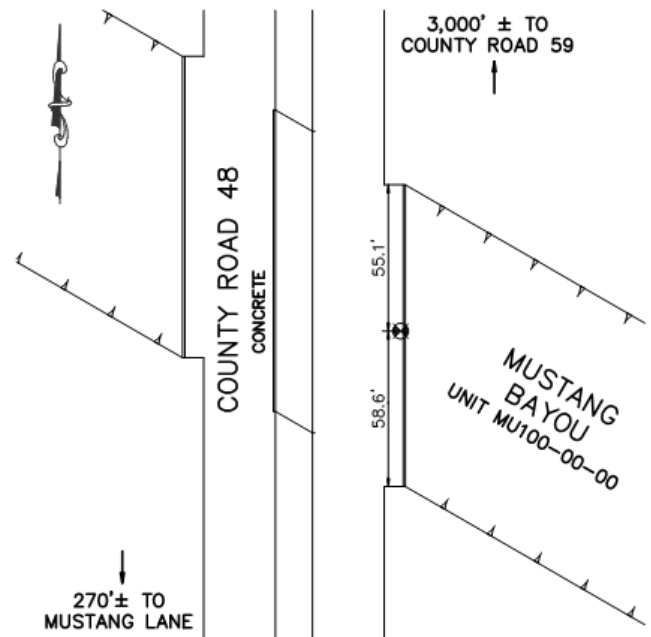


Photo – Station Detail



Photo – Station Area





Brazoria Drainage District No. 4

4813 W. Broadway
Pearland, TX 77581

Tel: 281-485-1434
Fax: 281-485-0065

Brazoria Drainage District No. 4
Benchmark Sheet

Benchmark No. RE-1

General Location: State Highway 35 at Resoft Ditch

Latitude: 29° 28' 28.10" N

Longitude: 95° 14' 44.71" W

Grid Northing: 13,739,227.04

Grid Easting: 3,162,774.12

State Plane Coordinates, Texas South Central Zone
(4204), NAD 83

Elevation: 37.71 NAVD 88, 2001 Adjustment

Benchmark No. RE-1 is a brass disk stamped 'RE-1' set on a concrete headwall, downstream side of a Resoft Ditch at State Highway 35 and Resoft Ditch, at stream centerline, east side of State Highway 35, in KeyMap 655Z near Unit J102-03-00.

Date: 09/11/15

Detail Sketch

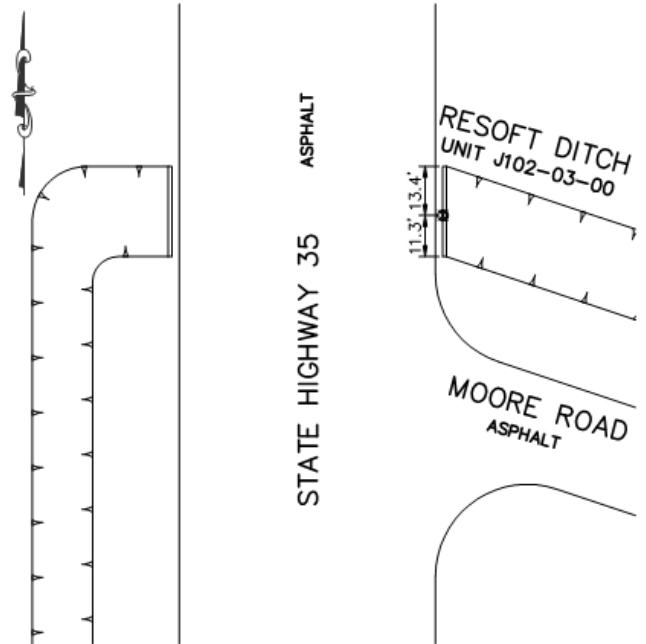


Photo – Station Detail



Photo – Station Area





Brazoria Drainage District No. 4

4813 W. Broadway
Pearland, TX 77581

Tel: 281-485-1434

Fax: 281-485-0065

Brazoria Drainage District No. 4
Benchmark Sheet

Benchmark No. TD-2

General Location: Old Alvin Road at Town Ditch

Latitude: 29° 34' 19.55" N

Longitude: 95° 16' 39.43" W

Grid Northing: 13,774,382.52

Grid Easting: 3,151,510.21

State Plane Coordinates, Texas South Central Zone
(4204), NAD 83

Elevation: 46.56 NAVD 88, 2001 Adjustment

Benchmark No. TD-2 is a brass disk stamped 'Brazoria Drainage District No. 4 BM No. TD-2' set on upstream side of concrete bridge at Old Alvin Road and Town Ditch, west side of Old Alvin Road, in KeyMap page 615K near Town Ditch.

Date: 05/09/13

Detail Sketch

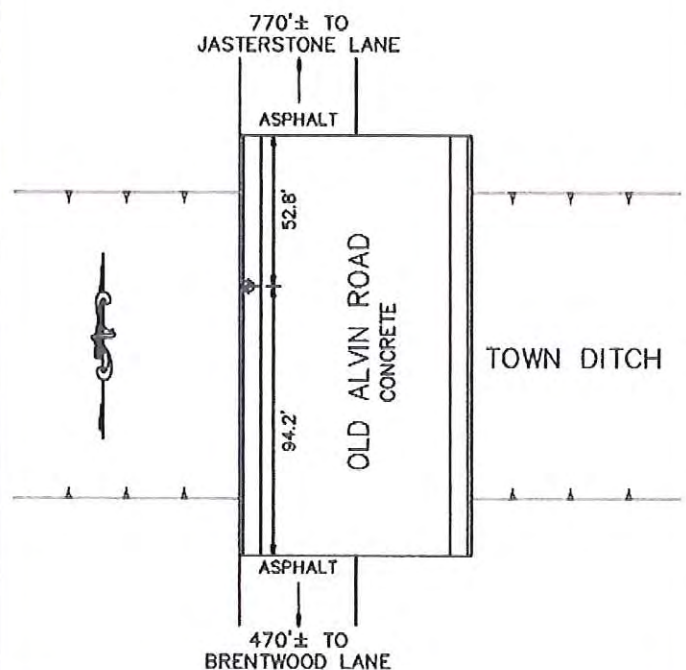


Photo - Station Detail



Photo - Station Area

